

BLACKWELL

company profile

Main and sub contractor to the public and private sectors providing core civil engineering, earthworks, remediation, geotechnical and engineering capabilities with over 50 years' experience.



Civil Engineering



Earthworks



Remediation



Geotechnical



Engineering





Company Profile

Contents

	Description	Page
1	Introduction Background to Blackwell and our fields of activity	3
2	Company Structure charts, management systems and resources	4
3	Services Summary of main service areas	8
4	Company Information Specifics including registrations and certification	14
5	Experience Brief summary of contracts	15
6	Contact Details Company offices and contact information	20



Introduction

C.A. Blackwell (Contracts) Ltd is a civil engineering, remediation, geotechnical, earthmoving and engineering contractor. The company operates nationally with its headquarters in Earls Colne, near Colchester and regional offices in Wakefield, Swansea and Minety (near Swindon). The company was established in 1956 and has grown in a sustained and profitable manner within core business areas.

As a multi-disciplined construction company, Blackwell has the capability to undertake works in the role of main contractor, sub contractor, design and build contractor or developer.

The company operates on a divisional basis with each division having equal access to resources and support systems. Operational flexibility and capability has been further enhanced by the investment in subsidiary and associated companies providing high tech equipment and managers in the fields of contaminated soil cleaning, soils improvement by stabilisation and blacktop road repairs.

Blackwell's background in earthworks gives the company the support of one of the largest in-house plant fleets in the UK, including items such as motorscrapers, dump trucks, dozers, excavators, motor graders, road planers and much more.

Fields of Activities

- Bulk earthmoving
- Roadworks and bridgeworks
- Carriageway reconstruction
- Infrastructure
- Land remediation and site preparation
- Drainage, sewerage and mains service installation
- Sewage treatment works
- Culverts
- Pumping stations
- Water retaining structures
- River works
- Landfill preparation
- Embankment and soil stabilisation
- Reinforced concrete
- Flood storage systems
- Retaining walls
- Groundworks
- Vertical band drains

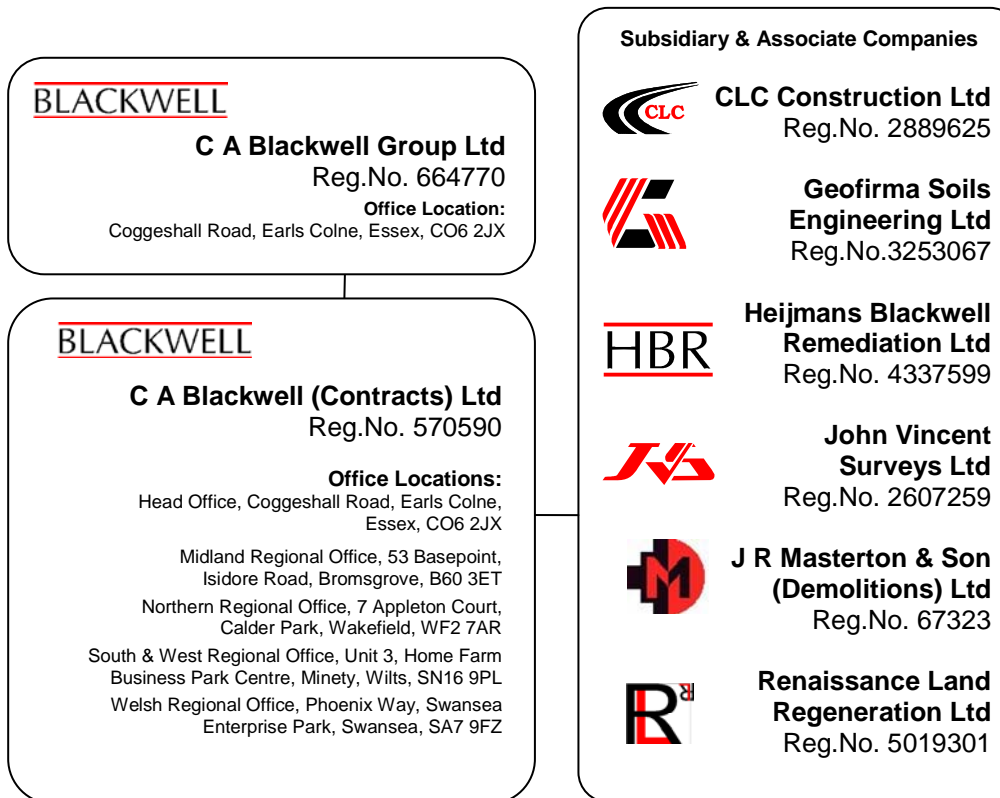


Company

Structure Charts

The parent company is C A Blackwell Group Ltd.

Blackwell Group Structure





Company

Structure Charts

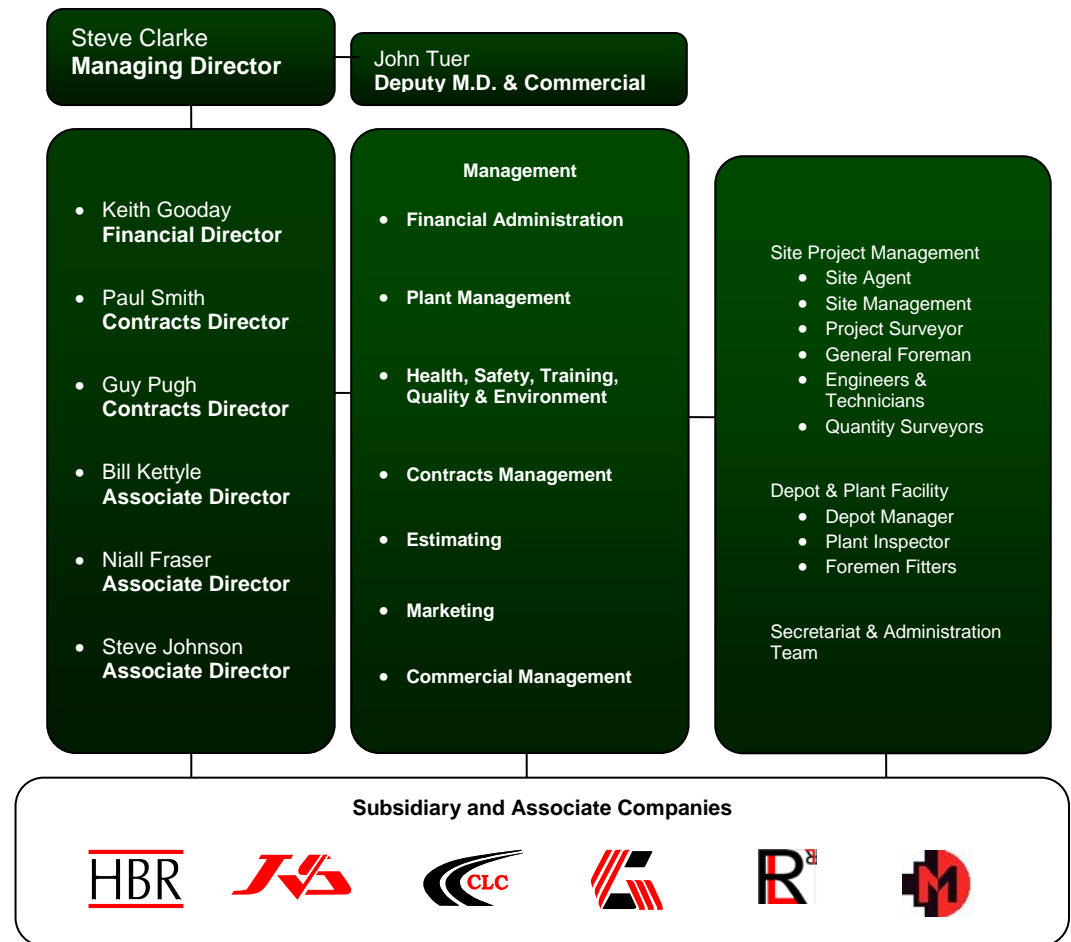
The company manages its various contracts through the operation of service divisions which generally retain their core staff but share plant and labour resources. Current operating divisions are:

- Earthmoving - major earthworks for the road, rail, airport, quarrying and environmental industries
- Civil Engineering - infrastructure and reinforced concrete structures
- Remediation - decontamination of brownfield sites
- Geotechnical - ground improvement works accelerated consolidation, modification by lime and cement and the installation of plastic pile cut off walls
- Engineering - servicing, repairs, fabrication, machining, general engineering and parts regeneration

In addition, the company has diversified into highly specialist fields by new start or acquisition of companies.

- Geofirma Soils Engineering Ltd carries out lime and cement stabilisation for roadworks, airports and building developments.
- CLC Ltd carries out road and trench reinstatement for utilities operators.
- HBR Ltd carries out decontamination of land by closed circuit soils washing.
- JVS Ltd undertakes topographic and hydro-graphic surveys, together with digital mapping and setting out.
- Renaissance Land Regeneration Ltd acquires and remediates brownfield land, alone or in risk-sharing partnerships.
- J R Masterton & Son (Demolitions) Ltd specialises in industrial plant dismantling, technical demolition and asbestos removal.

C A Blackwell (Contracts) Ltd Company and Management Structure





Company

Management Systems

Blackwell has a long-term commitment to managing and controlling the health and safety, quality and environmental aspects of our business. The company recognises that its reputation depends upon quality performance, and strenuous efforts are made by management to pursue this objective. Our management systems are designed specifically for the company's operations on site which include earthmoving, civil engineering construction, land regeneration and geotechnical works.

Health and Safety

Blackwell commits itself to implementing the Health and Safety at Work Regulations. The company is registered with the British Safety Council and gained the top safety award for 2006. The safety system incorporates a detailed policy and procedures outlining all instructions for personnel. Blackwell have implemented an Incident and Injury Free (IIF) Programme promoting behavioural safety to assist the continuing improvement of our health and safety performance. The company's safety leadership team was formed to co-ordinate, review and champion the IIF process and focus on the integration of the IIF culture across all aspects of the business.

Quality

Our quality system is registered to BS EN ISO 9001:2000 through independent assessment by an accredited certification body. The Quality Management System is regularly reviewed and improved so that our clients may be assured of satisfaction.

Our quality system incorporates strategy on achieving customer satisfaction, 'right first time' approach, achieving a reduction in non-conformances, to providing training to all our staff in the implementation of the quality management and to ensure the company's continuous improvement in subsequent years.

Environment

The Environment system is registered to BS EN ISO 14001:2004 through independent assessment by an accredited certification body. The company is committed to supporting and contributing to initiatives which reduce the effects the construction processes have on the environment. The policy recognises the need for control and continual improvement in environmental performance.

If you require further details on our management systems please do not hesitate to contact our nearest office and we will be happy to supply this information.





Company

Resources

Regular Full Time Employees

Staff 110 engaged in :	management	38
	commercial	12
	technical support	45
	administration	33
	engineering	13
Plant operators, groundworks and labourers		260-400

Workshops

The main engineering workshops covering some 36,000 sq ft. are located at the Head Office complex on seven acres of land at Earls Colne, Essex. The transport fleet is also based at this location.

Major Items of Plant

Blackwell's has invested heavily in the plant fleet due to its involvement in earthworks. This enables the company to have the support of the largest in-house plant fleet within the UK including items such as motorscrapers, dump trucks, dozers, excavators, motor graders, road planers and much more.

Plant Listing

Motorscrapers (single engine)	2
Articulated dumptrucks (25t to 40t capacity)	65
Bulldozers (D3 to D9 capacity)	26
Excavators above 40T	13
Excavators below 40T	24
Motor graders	4
Towed hydraulic scrapers	4
Loading shovels	9
Crushers	3
Screeners	3
Compactors	45
Towed rollers	35
Water bowsers	8
Wheeled tractors	11
Rotavators	3
Cranes	4
Road Planers	1
Fork Lifts	4
Ancillary	50





Services

Blackwell is split into various service divisions a summary of these categories follows:

Civil Engineering

The capability and expertise of undertaking construction from foundation to structure with the surrounding highway works, new roads, drainage, services, car parks, hard and soft landscaping. This single contractor approach offers savings in time, interface disruption and materials wastage.

Infrastructure — Blackwell can undertake all aspects of *infrastructure* provision from the hidden drainage and service duct work to the highly visible paving, street furniture and section 278 works.

Previous projects include major housing schemes, supermarkets, commercial developments, city centre pedestrianisation, suburban 'home zones' and RDA regeneration schemes.

Structures — Our *structures* experience includes reinforced concrete and steel schemes. We have successfully completed a selection of highway and footway bridges, pre-cast and insitu culverts, industrial basements, concrete and steel frame buildings, deep shafts, retaining walls, foundations, ground beams and dock levellers, flood defence and control structures.

Blackwell civil engineering is an approved contractor for many local and county authorities as well as for the national roads authorities of the Highways Agency and the Welsh Assembly.

Highways — Projects completed to date include those with *highways* works alone and those where the highways element is key to a development project. These include section 278 works, trunk road alterations, junction realignments and on-line dualling, motorway embankment repairs and drainage refurbishment, urban signalisation schemes and suburban traffic calming schemes.





Services

Earthmoving

Blackwell Earthmoving Division is the core business within the company. During the past 50 years of operations in motorway, rail, airport, reservoir and restoration contracts the company has established a reputation as a highly professional organisation producing consistently high quality workmanship.

The in-house plant fleet of owned and operated equipment as previously described in section two enhances the division's capability.

Road & Rail — Blackwell's earthworks operations on the construction of *rail and roadworks* range from the initial site clearance to final soiling including off site disposals, borrow pit imports and on site processing to optimise the re-use of available materials.

Past projects include sections of the majority of the UK motorway network, many bypasses, the Channel Tunnel Rail Link and airport rail links.

Airports — The demands of earthworks projects associated with live *airport* environments presents a multitude of challenges. These require specifically experienced managers to ensure thorough and optimum logistics control within the airside and landside boundaries.

Airport projects undertaken include international and regional airports incorporating new and extension of runway or taxiway construction, enabling works for passenger facilities and environmental improvements.

Quarrying — Blackwell offers a *quarrying* service to cement and aggregate producers. Such operations, whilst generally long term, vary in intensity with the fluctuating demand for the end product. The service includes product excavation, screening and blending as well as the final restoration.

Ground Improvements — In association with the geotechnical, remediation and civil engineering divisions, the earthmoving division resources are employed to improve the *foundation conditions* for new developments.

Various technologies are employed including lime/cement modification, soils blending, screening and gravity segregation; but the success of all methods depends on the ability to efficiently handle the earthworks materials in the raw conditions.

Site preparation projects undertaken include the establishment of the building and roadworks platforms for new towns / housing developments, motorway service areas, commercial and industrial parks.

River and Sea — Realignment and bank protection of *rivers* is a growing business sector but technically more and more demanding as the quality and detail required for environmental considerations overwhelms the original scheme objective. Habitat creation within and adjacent to rivers requires sophisticated GPS guidance on the excavators to achieve the designed profiles.

Recent projects include the re-alignment of a river for airport expansion, the construction of moorings and riverside leisure facilities, and bank reconstruction for flood defence.

Sea defence works are undertaken on a contract or maintenance basis to reconstruct beaches and sand dunes.



Services

Geotechnical

The technology of *soils improvement* to enhance the foundation capability on marginal development sites takes several forms but in general terms involve an increase in the basic shear strength of the soils strata. This includes:

- Vibrated stone columns to stiffen the weak matrix
- Surcharge and *band drain* systems to accelerate consolidation
- Modification of weak soils for pavements and slab foundations

In other circumstances the soils are reinforced by the addition of soil nails, geogrids and geotextiles, each of which rely on the transfer of the tensile stresses from the soils into the reinforcement medium.

The control of water within the soils strata or against the exposed surface is often necessary in the temporary or permanent works to avoid softening, sliding or collapse; cut off systems or targeted dewatering schemes being the standard approach.

Blackwell Geotechnical Division has experience and in-house resources for many of these methods. As most ground improvements are ultimately buried or otherwise covered, quality control by the employment of rigorous testing protocol is essential.

Soils modification and stabilisation — The potential for the conversion of very low strength soils to engineering fill by the controlled blending of lime / cement / pfa or granular wastes is often the key to the economic success of brownfield developments. Laboratory trials at

feasibility stage are however only the first step as the materials are rarely consistent in nature and yet must be converted to a controlled fill material with predictable long-term geotechnical characteristics.

Soils are modified in situ using Wirtgen rotavators and ex situ using a batch process pugmill.

Band drains — Vertical plastic micro core drains are inserted into the soft laminated soils such as peat or clays to provide a pathway for the rapid dispersion of pore water pressure resulting from an imposed surcharge. This results in an accelerated consolidation of compressible soils. The rigs available have a maximum penetration of 22m and outputs of up to 800 lin.m per hour.

Plastic Piling — Employed as either a river bank protection system or a deep cut-off system for groundwater or leachate. Using a specially designed steel sleeve, the piles are driven to depths of up to 6m through most ground conditions.

Reinforced Earth — Using a combination of granular soils, geogrids, geotextiles and weldmesh, walls can be constructed with long-term stability guarantees for slopes between 45 and 90 degrees. The appearance of the wall can be enhanced by a variety of finishes including retained vegetation, cribblock concrete panels or traditional dry stone walling.

Landfill Systems — The construction of *landfill* cells and leachate treatment systems utilising foundation clay mineral liners followed by the extensive use of geotextiles, geofabrics and polyethylene liners. Blackwell have extensive experience in the controlled deposition and compaction of the mineral liners to achieve the strict permeability criterion. The subsequent LD, MD or HDPE liners are then placed by specialist subcontractors under Blackwell's CQA regime.



Services

Geotechnical Continued

Embankment Reconstruction — The repairs of shallow or deep seated *embankment* failures invariably require completion with little allowable disruption to the adjacent track or road and therefore provide limited access for any traditional disposal or import operation. Various technologies are employed to convert the failed material into reusable engineering fill. This includes lime and or cement modification of the basic soils with reinforcement of the mass provided by geogrids, soil nailing and lime piling.

Remediation

Blackwell Remediation Division undertakes projects whose aim is to convert despoiled land into land for beneficial use. The ultimate goal is therefore to produce a clean site suitable for the next phase of the development, whether this involves housing, commercial, industrial or public open spaces, each have their own standards which must be attained as minimum remediation criteria.

A brownfield site with a history of process engineering will typically have a wide variety of secret contaminants or a “cocktail” for which high technology processes are available but are task specific. Whole scale remediation is therefore as much about the management of a multitude of processes and their operations as it is about the knowledge and capability to undertake the work on a contracting basis.

Blackwell remediation division has gained experience in many of the technologies and now undertakes them using either in-house resources or the specialist subsidiary company HBR.

High Energy Remediation — Sites of previous heavy industrial use generally contain a maze of foundations and service ducts with contamination plumes around tanks and drains.

Heavy demolition equipment is employed to raise and chase out the foundations which can then be recycled by crushing and screening to form valuable construction materials. Hot spot contamination is isolated and selectively removed to leave a validated site fit for redevelopment.

High Technology Remediation — Severely contaminated sites demand a radically different approach to identify, extract and remediate according to the appropriate technologies.

Blackwell Remediation Division has in-house resources through our specialist subsidiary business HBR such as:

- Complex soils washing plant ideally suited to cleansing granular based materials
- Coarse aggregate wash systems for cleaning and removing anthropological debris from demolition rubble or made ground screening arisings
- Stabilisation and solidification plant in the controlled addition of various reagent to convert or fix mobile contamination
- Ground water treatment plant
- Ex situ bio remediation systems including bio cell and windrow.





Services

Engineering

Blackwell has owned and operated earthmoving plant for more than 50 years. The current fleet holding of around 300 major items has been sourced from a variety of major manufactures from across the globe.

The plant has been used in the excavation and handling of virtually every type of earthworks material, from rock to peat, acid to alkaline, burning shale to frozen ground and in all manner of aggressive environments.

The need for thorough routine maintenance and prudent timing of the replacement wear parts is therefore fully understood by the Blackwell Engineering Division. Rigid procedures have been developed to ensure downtime is minimised by managed preventative maintenance. The limited availability of spares and replacement parts for all but the new plant items have prompted the investment by the engineering division into specialist equipment and training into the application of new welding technologies which enable worn or damaged parts to be regenerated to high standards.

With the growth of the company and the engineering support facilities, the division now offer all services for routine and preventative maintenance, major overhauls and rebuilds to external customers.

Major Rebuilds — Complete machine, engine and transmission rebuilds are carried out following detailed testing and evaluation of the extent of the wear or damage. Individual units can be stripped down to their basic components and the economics of the repair assessed. New or reconditioned parts are fitted where readily available. Alternatively, using the comprehensive workshop facilities, component parts can be rebuilt by high tech welding and machining processes.

On completion, the power units can be tested under load conditions using purpose built engine dyno test bed.

Specialist Fabrication — Many of the group activities require unique machinery, power and transmission and support systems. The division provides research and development services ranging from the initial engineering sketches, through to fabrication, testing and aftercare to support innovations. These development services are provided to customers under a confidentiality of intellectual property agreement.

We are able to offer repair and maintenance contracts for new machines and Blackwell rebuilds or customer machines can be sourced following our plant inspection.

Routine Maintenance — Maintenance services are offered at site or workshop locations and include general servicing, inspections, wear part replacements and computerised brake testing. In order to minimise machine downtime and costly haulage most repairs are carried out on site or exchange parts provided. At the end of the service life the plant can be prepared for resale with shot blasting, degreasing and repainting for presentation in our purpose built paint shop facility.

Trouble shooting and diagnostic investigation can be carried out on site or in the workshop by qualified technicians on various makes of machine.

We also service and maintain all our own support vehicles HGV and light transport, this is also available to our customers.





Services

Engineering continued

Part Regeneration — In the arduous and often aggressive environment that earthmoving plant is employed, not only are the basic wear parts at risk but also major structural elements such as excavator booms, track frames and buckets.

We transport our own equipment using rear steer low loaders capable of 80 ton payload and smaller items are accommodated with our plant hiab vehicle and 7 1/2 tonne beaver tail. These vehicles together with the experienced drivers are available to work for our customers.



The head office workshop facilities include:

- 36,000 sq ft of workshop space
- Air conditioning repairs
- Diagnostic capability
- On-site repairs and maintenance
- Auto electricians
- Shot blasting
- Plant and vehicle resprays (with Spray Bake oven)
- Appointed person for lifting operations
- NVQ Level 3 Assessors
- Supply of parts
- Preparation for sale
- Reclamation of worn parts
- Procurement of spares for all makes and models of machines and vehicles
- Specialist projects undertaken



Company Information

Company Formation	August 1956	
Company Setup	Private Limited Company	
Company Registration No:	570590	
Insurance Details	Employers Liability	£ 20 million
	Public/Product Liability	£ 10 million
	All Risks	£ 10 million
V.A.T. No	102 0443 43	
Tax Certificate	CIS 5 No 1191 0081 36 301	
Turnover	<u>Year</u>	<u>£ million</u>
	2007	68.5
	2006	64.3
	2005	61.9
	2004	58.7
Bankers	Barclays Bank Plc	
Auditors	Scrutton Bland	
Operating Services and Capacity	Blackwell undertakes civil engineering, earthworks, remediation, and geotechnical schemes.	

Trade Associations	Civil Engineering Contractors Association (CECA) Construction Plant Association (CPA)
Accreditations	Achilles Utilities Vendors Database (UVDB) - 77405 and Verify Supplier. Constructionline - 19473 - £55M comb. notation Contractors Health and Safety Assessment Scheme (CHAS) Considerate Contractor Scheme
Health & Safety	Members of the British Health & Safety Council. Incident and Injury Free Programme. Company Safety Group. Full health and safety policy and management system are in place.
Training Policy	Company policy covering all staff training including management and site personnel. A CITB training organisation and actively striving towards 100% NVQ and CSCS certification of managers and operatives.
Quality Assurance	ISO 9001:2000 - Certificate No: 14170/1 Valid until April 2010 for all company activities. A full company policy and management system are in place.
Environmental	ISO 14001:2004 - Certificate No: E248/1 Valid until June 2011 for all company activities. A full company policy and management system are in place.
Clients	Current and previous clients include: Regional development agencies, local and national authorities, transport companies, private developers, major construction contractors and private companies.



Experience

Current & Completed Expertise

Founded in 1956, Blackwell has established itself as one of the leading specialist earthmoving contractors in Europe. Motorway and trunk road contracts, land reclamation schemes, open cast coal sites, quarrying and site preparation have formed the core of the company's experience over the years.

Since Blackwells initial inception as an earthmoving specialist the company has undergone a structured diversification programme in order to widen the contracting capability. The range of operations in the role of principal, main or specialist sub contractor now includes mainstream civil engineering works, roads, structures, brownfield remediation schemes and general earthworks operations spanning roads, rail, quarries, river and sea defence projects.

Over the last 50 years Blackwell have undertaken over 700 projects and in the following pages we outline some of the most recent schemes under our core service divisions. Some of the schemes mentioned do involve more than one core service.

A detailed contract listing or specific contract case studies can be supplied if required. The full outlined case studies can be viewed as pdf versions at www.blackwellgroup.co.uk.





Experience

Civil Engineering - A summary of schemes

Stratford Station Early Civil Works

Client: Union Railways (North) Ltd Value: £ 2.5M Contract Period: 39 weeks

The early civil works carried out within the previously constructed Stratford Box structure and broadly comprise the construction of reinforced and mass concrete platform walls with precast deck units, mezzanine floor slabs to concourse building and provision/maintenance of site accommodation and welfare facilities.

Telford Millennium Community

Client: English Partnerships Value: £ 8.63M Contract Period: 112 weeks

A design and construction project for the remediation and development of a former colliery site, approximately 24ha in size, total area 35ha made up of residential, landscape/eco and former landfill areas. The completed scheme will comprise approx. 700 homes, community facilities, wildlife zones, open spaces and improved public transport facilities.

Tollgate Western Relief Road Phase 1 & 2

Client: Corporate Investments Ltd Value: £3.05M Contract Period: 47 weeks

Principal contractor for construction of the new relief road servicing an existing retail outlet park to facilitate future on site development. Phase 1 required construction of a 6m high embankment and Phase 2 required construction of new carriageway with 3 roundabouts and tear drop tie in as well as sub-base and extensive drainage, kerbing, surfacing, street lighting and signs.

Ramparts Business Park

Client: Berwick Upon Tweed Borough Council Value: £ 1.35M Contract Period: 26 weeks

A design and build contract, with design partner BWB Consulting, for the extension to the existing North Road Industrial Estate. The works consisted of bulk earthworks to re-profile the site and provision of infrastructure to service seven new development plots.

Wm Morrison Superstore, Grays

Client: Wm Morrison Supermarkets PLC Value: £ 1.1M Contract Period: 30 weeks

The works involved section 278 works and involved the widening, realignment and extension to existing roads, footpaths, kerbs, drainage and paved areas within a busy town to accommodate a major new superstore development.





Experience

Earthworks - A summary of schemes

Eastern Quarry

Client: Ravenside Investments Ltd Value: £6.03M Contract Period: 68 weeks

A scheme comprising up to five million cu.m of earthworks and land formation within a redundant chalk quarry. The end development will be one of three villages which will provide over 6,000 homes, around 260 acres of parks, lakes and woodland areas it will also incorporate leisure, retail and education facilities.

CTRL Section 440

Client: Union Railways (South) Ltd Value: £ 8.2M Contract Period: 137 weeks

The earthworks included the excavation and deposition of some 4.3 million cu.m of material some of which was required to be hauled distances of up to 13 km. In addition to the forming of new embankments 48 Ha of land was regraded and restored for agricultural use.

T5 Heathrow

Client: BAA /Laing O'Rourke Value: £ 70M + Contract Period: 300 weeks

Blackwell was appointed a framework contractor at an early stage in the design development phase and has worked in partnership with the team to provide budgets, programme, value engineering and technical advice. The works include significant quantities of earthworks arising principally for the need to construct a series of major underground facilities.

Whitstable Coastal Defence

Client: Canterbury City Council Value: £ 0.2 M Contract Period: 30.6 weeks

A beach replenishment scheme consisting of the replacement of groynes and beach based sea defences through the main shoreline and our works comprise the unloading, haulage and placement of beach material from barges which are run aground at the shoreline on a diminishing tide.

i54 Strategic Employment Site Phase 1 & 2, Wolverhampton

Client: Advantage West Midlands Value: £11.65M Contract Period: 42 weeks

Phase 1 incorporated the excavation and off site disposal of contaminants and Phase 2 incorporates earthworks, remediation and infrastructure to form a new development site and construction of internal spine roads.





Experience

Remediation - A summary of schemes

Adtranz Site, Trafford Park, Manchester

Client: Bombardier Transportation Ltd Value: £ 2.75M Contract Period: 38 weeks

Blackwell secured the remediation works for Phases 1, 2 and 3 following a period of detailed design development working closely with the consultant and client. The site, which is situated in a major industrial park to the south east of Manchester, is a former steelworks, with large quantities of steelworks slag, and was remediated to provide new commercial development space.

Woodside Works, Leeds

Client: Renaissance Land Regeneration Ltd & Capricorn Homes Value: £ 2.4M Contract Period: 26 weeks

The land was that of a former industrial site which housed the Aire Vale Dyeworks from pre 1851 to the mid 1950's. The main site location was used as a tip for the deposition of waste materials associated with the processes undertaken by the Dyeworks. The works involved the remediation and primary infrastructure for residential end use.

Sideway Phase 1, Stoke on Trent

Client: Advantage West Midlands Value: £ 2.7M Contract Period: 26 weeks

Appointed to undertake the remediation of a former unlicensed landfill site which incorporated the selective excavation, processing and disposal of non-hazardous and hazardous waste, screening and crushing of hard materials, excavation of borrow area and backfill landfill.

Royal Albert Basin, Becton, East London

Client: London Development Agency Value: £ 9.35M Contract Period: 90 weeks

The site comprises of five separate areas totalling 100 acres of land contaminated by previous uses. The site will be redeveloped for mixed use including residential, commercial and industrial with public open space and landscaping to suit. As design and build contractor Blackwell was responsible for the completion and approval process for the remediation strategy and design of the necessary remediation methods.

Middlehaven Dock Reclamation

Client: English Partnerships Value: £ 3.56M Contract Period: 78 weeks

Blackwell was engaged as the remediation and earthworks contractor within the design and build team for the reclamation of the disused dock area in preparation for the development phase including domestic and commercial schemes.





Experience

Geotechnical - A summary of schemes

Midland Quarry, Nuneaton

Client: Redrow Homes Value: £ 4.3M Contract Period: 58 weeks

Blackwell undertook the reclamation and reinforced earth wall design and construction scheme.

Medway Gate, Cuxton

Client: Persimmon Homes Value: £ 1.97M Contract Period: 39 weeks

The scheme involved the advanced earthworks, re-profiling, and civil engineering incorporating a reinforced buttress wall.

St. Stephens Development, Hull

Client: Nuttals Value: £ 52K Contract Period: 2 weeks

The scheme involved the installation of band drains for a new development.

Royal Quay Phase 2

Client: Laing O'Rourke Value: £ 18K Contract Period: 1 week

Supply and installation of band drains on the quay development.

Efford Landfill Site

Client: Onyx Hampshire Ltd Value: £ 556 k Contract Period: 14 weeks

Works to landfill cells comprising clay lining, LLDPE lining and soils restoration.

Scotswood Road Improvements, Newcastle upon Tyne

Client: Newcastle City Council Value: £ 1.3M Contract Period: 19 weeks

Advanced offline earthworks and drainage to form road widening to subbase level including statutory authority diversions.

John Radcliffe Hospital Site

Client: The Hospital Company Value: £ 1.4 M Contract Period: 30 weeks

Enabling works for the new hospital including earthworks, soils modification, reinforced earth walls, drainage, kerbing and car parks.





Contacts

For further information please visit our website www.blackwellgroup.co.uk or for specific requirements please contact your nearest office:

Head Office

Coggeshall Road
Earls Colne
Essex, CO6 2JX
tel: 01787 223131
fax: 01787 223235
email: enquiries@cablackwell.co.uk

Midlands Regional Office

53 Basepoint,
Isidore Road,
Bromsgrove, B60 3ET
tel: 01527 888970
fax: 01527 888973
email: mro@cablackwell.co.uk

Northern Regional Office

7 Appleton Court
Calder Park
Wakefield, WA2 7AR
tel: 01924 250132
fax: 01924 251394
email: nro@cablackwell.co.uk

South & West Regional Office

Unit 3, Home Farm Business Centre
Minety
Wiltshire, SN16 9PL
tel: 01666 860386
fax: 01666 861353
email: swro@cablackwell.co.uk

Welsh Regional Office

Phoenix Way
Swansea Enterprise Park
Swansea, SA7 9FZ
tel: 01792 701348
fax: 01792 701240
email: wro@cablackwell.co.uk

We can provide copies of our report and accounts, insurance details, service area and target market brochures, contract case studies and company policies should you require more in-depth information.

company profile

BLACKWELL

Head Office

Coggeshall Road
Earls Colne

Essex, CO6 2JX

tel: 01787 223131

fax: 01787 223235

email: enquiries@cablackwell.co.uk

Midlands Regional Office

53 Basepoint,
Isidore Road,

Bromsgrove, B60 3ET

tel: 01527 888970

fax: 01527 888973

email: mro@cablackwell.co.uk

Northern Regional Office

7 Appleton Court
Calder Park

Wakefield, WF2 7AR

tel: 01924 250132

fax: 01924 251394

email: nro@cablackwell.co.uk

South & West Regional Office

Unit 3, Home Farm Business Centre
Minety

Wiltshire, SN16 9PL

tel: 01666 860386

fax: 01666 861353

email: swro@cablackwell.co.uk

Welsh Regional Office

Phoenix Way
Swansea Enterprise Park

Swansea, SA7 9FZ

tel: 01792 701348

fax: 01792 701240

email: wro@cablackwell.co.uk

Civil Engineering



Earthworks



Remediation



Geotechnical



Engineering

